

Modeling the occurrence of events subject to a reporting delay via an EM algorithm

Roel Verbelen^{1,3,4}, Katrien Antonio^{1,2,3,4}, Gerda Claeskens^{1,3}, and Jonas Crevecoeur^{1,4}

¹*Faculty of Economics and Business, KU Leuven, Belgium.*

²*Faculty of Economics and Business, University of Amsterdam, The Netherlands.*

³*LStat, Leuven Statistics Research Center, KU Leuven, Belgium.*

⁴*LRisk, Leuven Research Center on Insurance and Financial Risk Analysis, KU Leuven, Belgium.*

September 19, 2019

Abstract

A delay between the occurrence and the reporting of events often has practical implications such as for the amount of capital to hold for insurance companies, or for taking preventive actions in case of infectious diseases. The accurate estimation of the number of incurred but not (yet) reported events forms an essential part of properly dealing with this phenomenon. We review the current practice for analysing such data and we present a flexible regression framework to jointly estimate the occurrence and reporting of events from data at daily level. By linking this setting to an incomplete data problem, estimation is performed by the expectation-maximization algorithm. The resulting method is elegant, easy to understand and implement, and provides refined forecasts on a daily level. The proposed methodology is applied to a European general liability portfolio in insurance.

Keywords: EM algorithm, Poisson regression model, Reporting delay

1 Introduction

A delay between the occurrence and reporting of events leads to statistical challenges. Such delays occur in different areas. In an actuarial setting a claim is only reported some time after its occurrence. However, financial regulations force insurance companies to hold sufficient reserves in order to be able to fulfill future liabilities with respect to claims arising from contracts sold in the past (Wüthrich and Merz, 2008). When estimating the incidence of a disease, it is necessary to account for delays in the reporting of cases. Statistical surveillance systems for the timely detection of outbreaks of infectious diseases have to properly adjust for reporting delays in order to take timely preventive action (see e.g. Noufaily et al., 2015, 2016). In reliability engineering and quality management, the statistical analysis of warranty data requires taking the time between the failure and its reporting into account in order to predict the number of future warranty claims (see e.g. Kalbfleisch et al., 1991; Wu, 2013).

Other used terminology for the occurrence and reporting of events includes primary and secondary events (Becker and Cui, 1997), as well as initiating and consequent events (Kalbfleisch and Lawless, 1991).

We first give an overview of existing methods in Section 2. Section 3 contains the methodology to jointly estimate the occurrence and reporting of claims from daily data. Section 4 presents the results of applying the model to a case study where out-of-sample forecasts are

used to assess the predictive performance of the method. Section 5 concludes. Appendix A contains the derivation of the asymptotic covariance matrix of the regression parameter estimators.

2 Notation and overview of models

Figure 1a schematically presents a scenario for one event, indexed with i , in continuous time. The event of interest (e.g. the failure of a product or the occurrence of a car damage) happens at time T_i , though it is only reported at a later time S_i . The reporting delay $D_i = S_i - T_i$. Figure 1b represents the occurrence of multiple events over time. At time τ the analyst has to predict or evaluate the number of events that incurred in the past (before or at τ), but will only be reported in the future (after τ). When the reporting occurs before τ , the observation is complete (events 1 and 3 in Figure 1b), while reporting after τ corresponds with an unreported case (events 2 and 4 in Figure 1b). There is no information available for these unreported cases. The dashed grid in Figure 1b indicates the aggregation of events when choosing a cruder discrete time scale.

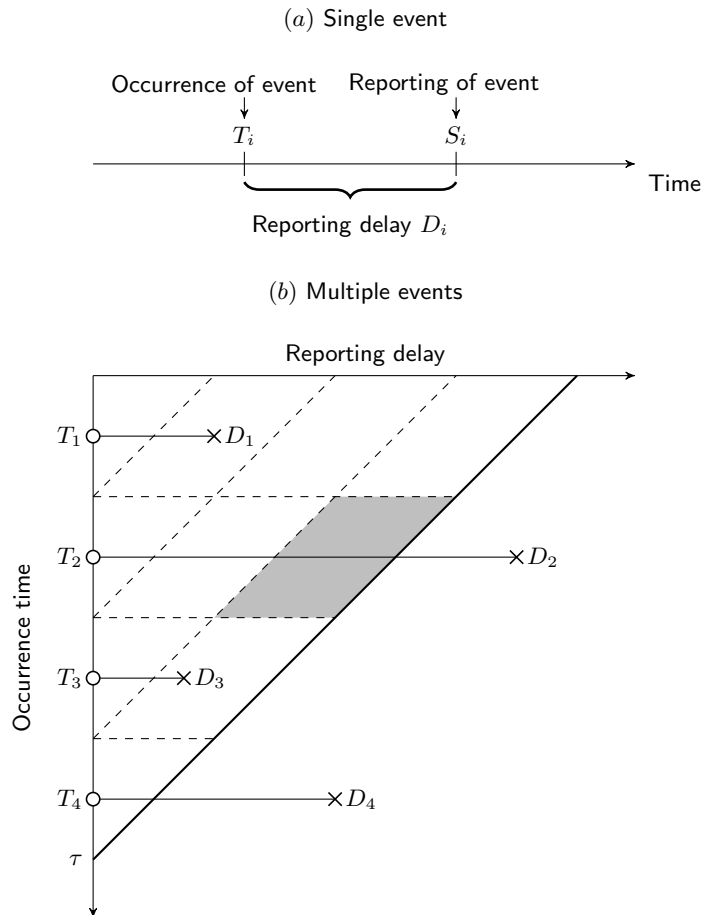


Figure 1: (a) timeline representing the occurrence and reporting of a single event. (b) occurrence and reporting of multiple events over time. Events 2 and 4 are unobserved as these events get reported after the evaluation date τ . The dashed grid indicates the aggregation of the data towards a cruder time scale.

2.1 Notation

In our notation we think of event counts on a daily level, even though the notation is more generic and may refer to any other time unit of interest.

The number of events which occurred on day t is denoted by N_t , where the integer t indicates the occurrence date and ranges from 1 to τ , which is the evaluation date. The number of these events which have been reported after precisely d days are denoted as N_{td} such that $N_t = \sum_{d=0}^{\infty} N_{td}$. It is important to realize that an event is only observed if it has been reported before or at the evaluation date τ . This causes N_t to be right-censored and the reporting delay distribution of the observed events occurring on day t to be right-truncated at $\tau - t$ (see e.g. Klein and Moeschberger, 2003). We denote the reported (hence, the superscript r), thus observed, number of events which occurred on day t by

$$N_t^r = \sum_{d=0}^{\tau-t} N_{td}.$$

We denote the number of events that have happened on day t but are not yet reported by

$$N_t^{\text{nr}} = \sum_{d=\tau-t+1}^{\infty} N_{td},$$

and the total number of such events over all occurrence days by

$$N^{\text{nr}} = \sum_{t=1}^{\tau} N_t^{\text{nr}} = \sum_{t=1}^{\tau} \sum_{d=\tau-t+1}^{\infty} N_{td}.$$

The objective is to use the observed events $\mathbf{N}^r = \{N_{td} \mid 1 \leq t \leq \tau, d \geq 0, t + d \leq \tau\}$ to predict the events that are not yet reported $\mathbf{N}^{\text{nr}} = \{N_{td} \mid 1 \leq t \leq \tau, d > 0, t + d > \tau\}$. We distinguish models for discrete time and for continuous time.

2.2 Time as a discrete variable, aggregated event counts

Data are usually collected at discrete time points rather than in continuous time. The day is the natural time unit in many administrative systems. Current practice is to summarize the daily data by aggregating event counts over time, typically by month, quarter or year.

The study of Becker and Cui (1997) on the reporting of AIDS diagnosis uses 3-month periods, for example. Insurance studies traditionally use yearly claim counts (Wüthrich and Merz, 2008). Many granular data insights are lost in the aggregation process. In this paper, see Section 3.2, we specifically focus on data at *daily* level as opposed to working with counts aggregated over longer time periods.

For completeness, we first summarize the current modeling approaches for such aggregated data before detailing models for the daily data. Most existing methods for estimating the number of occurred but unreported events are designed for data aggregated over longer time periods, conveniently summarized in a triangular display (also called run-off triangle in actuarial literature). This is an incomplete two-way contingency table where the rows contain the period of occurrence of the event, while the reporting delay is indicated in the columns. Since we can only observe what has been reported, the lower right-hand “*triangle*” is empty and has to be predicted. Table 1 depicts the structure of such a triangle. The shaded region in Figure 1b and Table 1 visualizes the aggregation of events registered in continuous time into a single observation in this triangle.

Table 1: Triangular display with aggregated event counts. Only the event counts in the upper triangle are observed, whereas the occurred but not reported counts in the lower triangle have to be predicted.

Occurrence period	Reporting delay				
	0	...	$\tau - t$...	$\tau - 1$
1	N_{10}	...	$N_{1,\tau-t}$...	$N_{1,\tau-1}$
⋮					
t	N_{t0}	...	$N_{t,\tau-t}$		
⋮					
τ	$N_{\tau 0}$				

A cell N_{td} in this triangle counts the number of events in occurrence period t , reported after d periods. The so-called chain ladder method is probably the most widely used technique to predict numbers of unreported events. Typically, this method uses event counts obtained by aggregating over yearly periods. This method is equivalent to a Poisson regression model (Hachemeister and Stanard, 1975; Renshaw and Verrall, 1998) which assumes that there exist parameters $\lambda_1, \dots, \lambda_\tau > 0$ and $p_0, \dots, p_{\tau-1} > 0$ with $\sum_{d=0}^{\tau-1} p_d = 1$ such that the incremental event counts N_{td} are independently Poisson distributed with $E[N_{td}] = \lambda_t p_d$ for all $t = 1, \dots, \tau$ and $d = 0, \dots, \tau - 1$. In contrast with the model assumptions that are introduced in Section 3.1, the intensities λ_t and the reporting delay probabilities p_d are unstructured. The reporting process is assumed to be stationary since the probabilities p_d do not depend on the occurrence period t and the sum constraint implies that all claims are assumed to be reported by the end of delay period $\tau - 1$. The likelihood for the observed upper triangle \mathbf{N}^r corresponding to the Poisson model formulation of the chain ladder method is

$$\tilde{\mathcal{L}}(\Psi; \mathbf{N}^r) = \prod_{t=1}^{\tau} \prod_{d=0}^{\tau-t} \frac{\exp(-\lambda_t p_d) (\lambda_t p_d)^{N_{td}}}{N_{td}!},$$

where we denote $\Psi = \{\lambda_1, \dots, \lambda_\tau, p_0, \dots, p_{\tau-1}\}$. Maximizing the log-likelihood requires to solve the following set of equations

$$\sum_{d=0}^{\tau-t} \hat{\lambda}_t \hat{p}_d = \sum_{d=0}^{\tau-t} N_{td}, \quad t = 1, \dots, \tau, \quad (1)$$

$$\sum_{t=1}^{\tau-d} \hat{\lambda}_t \hat{p}_d = \sum_{t=1}^{\tau-d} N_{td}, \quad d = 0, \dots, \tau - 1, \quad (2)$$

subject to all elements of Ψ being positive and $\sum_{d=0}^{\tau-1} \hat{p}_d = 1$. The Poisson maximum likelihood conditions equate the sums of the claim counts in each row and column of the observed upper triangle \mathbf{N}^r to their expected value counterparts. Mack (1991, 1993) pointed out that this set of equations can be solved recursively due to the triangular structure. A more standard approach to estimate the parameters is to formulate the model as a GLM and use a numerical optimizer (see Taylor, 2000; England and Verrall, 2002; Wüthrich and Merz, 2008).

2.3 Time as a continuous variable

Martínez Miranda et al. (2013) extend the traditional chain ladder framework for the claim count data in an insurance context to a continuous chain ladder setting. They reformulate the

classical technique of chain ladder as a histogram type of estimator and replace this histogram by a two-dimensional kernel density estimator with support on the triangle. By assuming a multiplicative kernel, the local linear density estimate can be extrapolated to the whole square (see Table 1) which provides a forecast for the occurred but not yet reported events in the lower triangle. The model can be applied to data recorded in continuous time, although it is illustrated in that paper on data aggregated on a monthly level.

A Poisson process is natural to model the number of events occurring during a certain time interval. The events counting process $N(t) = \sum_{i \geq 1} 1\{T_i \leq t\}$ for $t \geq 0$ records all event occurrences at or before time t . Verrall and Wüthrich (2016) assume that $N(t)$ is an inhomogeneous Poisson point process with an intensity $(e(t)\Lambda(t))$ where, for $t \geq 0$, $e(t)$ is the exposure and $\Lambda(t)$ is the instantaneous event frequency. The exposure is the number of subjects at risk. This can be the number of policyholders in an insurance context or the size of the population when modelling disease infections. Furthermore, the reporting delay $D_i = S_i - T_i$, the time in between the reporting of the case and its occurrence, is in this model assumed to be independent of the occurrences and of other reporting delays, though it is allowed to have a time-dependent distribution. Due to the delay in reporting only a thinned Poisson process is observed, which makes the likelihood hard to handle. Jewell (1989) considered such a continuous time model in a Bayesian context and compares the results with the maximum likelihood approach which for computational reasons requires some additional assumptions, such as a known weekly pattern for daily observed data. Likewise, for computational reasons, the reporting delay distribution is there assumed piecewise constant.

Lawless (1994) inverts the direction of time, effectively transforming the truncated data into censored data. Standard statistical methods for censored data, such as the Cox proportional hazard model (Cox, 1972), then model the reporting of events. This approach gives a lot of flexibility to the reporting process, but requires a non-parametric estimator for the intensity of the occurrence process.

A Cox process, or doubly stochastic Poisson process, extends a Poisson process by modeling the intensity as a non-negative stochastic process. Badescu et al. (2016, 2019) and Avanzi et al. (2016) propose to model the event occurrence process along with its reporting delays as a marked Cox process to allow for overdispersion and serial dependency. An expectation-maximisation algorithm is used for estimation. We work out such algorithm in detail for the discrete time case, see Section 3.2.

2.4 Using more detailed information

Nowadays, detailed information is being collected, nearly always this includes the occurrence date and the reporting date of each individual event. Using aggregation methods, as in Section 2.2, that summarize data by month, or even by year as is still current practice in insurance, leads to information loss, while a continuous process, as in Section 2.3, recording the precise timing (minutes, second) of the event seems overkill. Models proposed for the granular data registered at daily level currently receive increased interest (e.g. in the insurance literature). However, these models pose some methodological challenges. *Ad hoc* methods have been used to estimate parameters, such as plug-in estimators for the weekday seasonal pattern in Verrall and Wüthrich (2016) or a two-stage method in which the reporting delay distribution is estimated first and then plugged in to estimate the parameters related to the occurrence process (Antonio and Plat, 2014; Badescu et al., 2019).

The method that we work out in detail avoids the use of such ad hoc methods. We construct our model on the daily level as opposed to considering continuous time models (such as the Poisson or Cox processes) or aggregated versions by week, month or year (such as the traditional chain ladder method). In contrast to previous contributions, we incorporate covariates in both

the occurrence of events and the reporting delay distribution. For estimation we employ an expectation-maximisation method (Dempster et al., 1977; McLachlan and Krishnan, 2008) to jointly estimate the occurrence and reporting delay of the events.

3 An EM framework to jointly estimate the occurrence and reporting delay of events

3.1 Model assumptions

While our attention focuses on daily data, the time unit can easily be adapted to other circumstances. The statistical analysis of the daily event counts using our proposed model is based on the following two model assumptions:

- (A1) The daily total event counts N_t for $t = 1, \dots, \tau$ are independently Poisson distributed with intensity $\lambda_t = e_t \exp(\mathbf{x}'_t \boldsymbol{\alpha})$, where e_t is the exposure, \mathbf{x}_t is the vector of covariate information corresponding to occurrence day t and $\boldsymbol{\alpha}$ is a parameter vector.
- (A2) Conditional on N_t , the event counts N_{td} for $d = 0, 1, 2, \dots$, are multinomially distributed with probabilities p_{td} . These probabilities p_{td} are structured by a set of parameters $\boldsymbol{\theta}$ in a parametric model.

Our approach is capable of dealing with any parametric structure for the reporting delay probabilities p_{td} . In Section 4.2, we let the data set assist us in choosing an appropriate reporting delay structure for the case study. Introducing covariates in the model for the occurrence of events as well as the model for reporting delay allows us to build flexible models. The expected number of events is made proportional to the exposure. Evolutions over time or seasonal trends are modeled to improve predictions. This includes fluctuations in both the event counts and their reporting delays by month, day of the month or day of the week of the occurrence date. Additionally, one can also model relationships with external covariates which might influence the events such as economic circumstances, business cycles and weather conditions. On top of that, day-specific particularities in the reporting delay can be modeled using designated day probabilities.

3.2 Parameter estimation using the EM algorithm

We bundle the parameters to be estimated in $\Theta = \{\boldsymbol{\alpha}, \boldsymbol{\theta}\}$. Based on the model assumptions in Section 3.1, the daily event counts N_{td} are independently Poisson distributed with intensities $\lambda_t p_{td}$ for $t = 1, \dots, \tau$ and $d = 0, 1, 2, \dots$. This can be seen by writing the joint probability of $N_{td} = n_{td}$ for $d = 0, 1, 2, \dots$ as the product of the probability of their sum N_t being equal to $n_t = \sum_{d=0}^{\infty} n_{td}$ and the conditional multinomial probability:

$$\begin{aligned} & \text{P}(N_{t0} = n_{t0}, N_{t1} = n_{t1}, N_{t2} = n_{t2}, \dots) \\ &= \text{P}(N_t = n_t) \cdot \text{P}(N_{t0} = n_{t0}, N_{t1} = n_{t1}, N_{t2} = n_{t2}, \dots \mid N_t = n_t) \\ &= \frac{\exp(-\lambda_t) \lambda_t^{n_t}}{n_t!} \cdot \frac{n_t!}{\prod_{d=0}^{\infty} n_{td}!} \cdot \prod_{d=0}^{\infty} (p_{td})^{n_{td}} = \prod_{d=0}^{\infty} \frac{\exp(-\lambda_t p_{td}) (\lambda_t p_{td})^{n_{td}}}{n_{td}!}, \end{aligned}$$

which factorizes into Poisson probabilities. This property is sometimes referred to as the thinning property of Poisson random variables. In particular, the observed event count N_t^r on day t is Poisson distributed with intensity $\lambda_t p_t^r$ where $p_t^r = \sum_{d=0}^{\tau-t} p_{td}$ and the unreported event count N_t^{nr} is Poisson distributed with intensity $\lambda_t p_t^{\text{nr}}$ where $p_t^{\text{nr}} = 1 - p_t^r$. Conditional on N_t^r , the

observed daily event counts $\{N_{td} \mid d = 0, 1, \dots, \tau - t\}$ are multinomially distributed with parameters N_t^r and $\{p_{td}/p_t^r \mid d = 0, 1, \dots, \tau - t\}$, since we have to account for the right-truncation of the reporting delay.

The likelihood of the observed data (the upper part of the triangular display in Table 1) can then be written as the product of a Poisson likelihood and a multinomial likelihood,

$$\mathcal{L}(\Theta; \mathbf{N}^r) = \prod_{t=1}^{\tau} \frac{\exp(-\lambda_t p_t^r) (\lambda_t p_t^r)^{N_t^r}}{N_t^r!} \frac{N_t^r!}{\prod_{d=0}^{\tau-t} N_{td}!} \prod_{d=0}^{\tau-t} \left(\frac{p_{td}}{p_t^r} \right)^{N_{td}}. \quad (3)$$

Equivalently, the likelihood can also be constructed by treating the daily event counts as right-censored, since the number of unreported events is unknown,

$$\mathcal{L}(\Theta; \mathbf{N}^r) = \prod_{t=1}^{\tau} \sum_{n=N_t^r}^{\infty} \frac{\exp(-\lambda_t) \lambda_t^n n!}{n!(n - N_t^r)! \prod_{d=0}^{\tau-t} N_{td}!} \prod_{d=0}^{\tau-t} (p_{td})^{N_{td}} (p_t^{\text{nr}})^{n - N_t^r}.$$

Indeed, this expression reduces to (3) by rewriting the sum over n using the Taylor expansion for the exponential function. The corresponding log-likelihood equals

$$\log \mathcal{L}(\Theta; \mathbf{N}^r) = \sum_{t=1}^{\tau} \left\{ -\lambda_t p_t^r + N_t^r \log(\lambda_t) + \sum_{d=0}^{\tau-t} \{N_{td} \log(p_{td}) - \log(N_{td}!)\} \right\}. \quad (4)$$

Note that, due to the right truncation of the reporting delay (or, the right censoring of the event counts), the log-likelihood (4) contains terms which depend on the parameters of both the Poisson model for event occurrences (appearing in λ_t) and the reporting delay distribution (appearing in p_{td} and p_t^r). This complicates direct maximum likelihood estimation as it prevents separate optimization with respect to each of these parameter components. Optimization using a standard numerical method such as Newton-Raphson is still feasible, but we cannot rely on statistical software packages and we need to derive the analytical expressions of the gradient and Hessian of the log-likelihood (4).

Instead, we choose to treat the truncation as a missing data problem and employ the EM algorithm (Dempster et al., 1977; McLachlan and Krishnan, 2008) to simplify maximum likelihood parameter estimation, see also Pagano et al. (1994). Consider the complete version of the data $\mathbf{N} = \mathbf{N}^r \cup \mathbf{N}^{\text{nr}} = \{N_{td} \mid 1 \leq t \leq \tau, d \geq 0\}$ which augments the observed daily event counts from the upper part of the triangular display in Table 1 with the unknown values of the future event counts in the lower triangle. Given the complete data \mathbf{N} , we construct the complete log-likelihood function

$$\log \mathcal{L}_c(\Theta; \mathbf{N}) = \sum_{t=1}^{\tau} \left\{ -\lambda_t + N_t \log(\lambda_t) + \sum_{d=0}^{\infty} \{N_{td} \log(p_{td}) - \log(N_{td}!)\} \right\}, \quad (5)$$

which allows for a separate estimation of the parameters of the event occurrence model (appearing in λ_t) and those of the reporting delay distribution (appearing in p_{td}). The observed data log-likelihood (4) can be maximized by iteratively maximizing the complete data log-likelihood (5) using the EM algorithm. However, as we do not fully observe the complete data, the complete log-likelihood is a random variable. Therefore, it is not possible to directly optimize (5). Yet, the EM algorithm exploits the simpler form of the complete log-likelihood by iterating between computing expectations in an E-step and maximization in an M-step. Applied to our setting, the numbers of unreported events are replaced by their expected values in the E-step and the log-likelihood of the augmented data is maximized in the M-step. The M-step still requires numerical optimization, but the parameters with respect to the event occurrence model can be estimated separately from the reporting delay parameters and standard software routines can be utilized in the absence of truncation. We discuss the steps of the EM algorithm in more detail for the k th iteration.

E-step. We take the conditional expectation of the complete log-likelihood (4) given the observed data \mathbf{N}^r and using the current estimate $\Theta^{(k-1)}$ of the parameter vector Θ :

$$Q(\Theta; \Theta^{(k-1)}) = E_{\Theta^{(k-1)}} [\log \mathcal{L}_c(\Theta; \mathbf{N}) | \mathbf{N}^r]. \quad (6)$$

This requires to compute the expected values of the future event counts

$$N_{td}^{(k)} = E_{\Theta^{(k-1)}} [N_{td} | \mathbf{N}^r] = \begin{cases} N_{td} & \text{if } d \leq \tau - t \\ \lambda_t^{(k-1)} p_{td}^{(k-1)} & \text{otherwise,} \end{cases} \quad (7)$$

for $t = 1, \dots, \tau$ and the total daily event counts $N_t^{(k)} = \sum_{d=0}^{\tau-t} N_{td} + \sum_{d=\tau-t+1}^{\infty} N_{td}^{(k)}$. The terms in (6) containing $E_{\Theta^{(k-1)}} [\log(N_{td}!) | \mathbf{N}^r]$ do not play a role in the EM algorithm as they do not depend on the unknown parameter vector Θ .

M-step. We maximize the expected value (6) of the complete data log-likelihood obtained in the E-step with respect to the parameter vector Θ . In order to optimize (6) with respect to α as defined in model assumption (A1), we have to maximize the terms related to the event occurrence model,

$$-\sum_{t=1}^{\tau} \lambda_t + \sum_{t=1}^{\tau} N_t^{(k)} \log(\lambda_t) = -\sum_{t=1}^{\tau} e_t \exp(\mathbf{x}'_t \alpha) + \sum_{t=1}^{\tau} N_t^{(k)} \{\log(e_t) + \mathbf{x}'_t \alpha\}, \quad (8)$$

which is a weighted Poisson log-likelihood with an offset term (related to the exposure). The parameter values optimizing (8) are denoted by $\alpha^{(k)}$. Updating the estimates for the parameters θ of the reporting delay distribution requires the maximization of

$$\sum_{t=1}^{\tau} \sum_{d=0}^{\infty} N_{td}^{(k)} \log(p_{td}(\theta)). \quad (9)$$

From a numerical point of view, we truncate the infinite sums over the reporting delay d at $d = \tau - 1$, which corresponds to completing the triangular display in Table 1 without further extending it. In case the reporting delay distribution is such that the subsequent terms are non-negligible, the sum should be truncated at an index larger than $\tau - 1$.

Initial step. The first E-step of the EM algorithm with $k = 1$ requires a starting value $\Theta^{(0)}$ for the parameter set. Our strategy is to first apply the chain ladder method on the daily event counts to obtain initial predictions $N_{td}^{(0)}$ of the future event counts. This requires aggregating the events as sketched in Table 1, where the aggregation is now using daily periods (in both the occurrence period as well as the reporting delay direction). Then, we initialize Θ by applying an M-step based on these initial event count estimates. More specifically, we use the [Wüthrich and Merz \(2015\)](#) formulation of the chain ladder method in terms of the chain ladder factors. Therefore, we define the cumulative event counts as

$$C_{td} = \sum_{j=0}^d N_{tj} \quad \text{for } t = 1, \dots, \tau, \text{ and } d = 0, \dots, \tau - 1,$$

and estimate the development factors of the chain ladder method on a daily level as

$$\hat{f}_d = \frac{\sum_{t=1}^{\tau-d} C_{td}}{\sum_{t=1}^{\tau-d} C_{t,d-1}} \quad \text{for } d = 1, \dots, \tau - 1. \quad (10)$$

The chain ladder method applies these development factors to the latest cumulative event count in each row to produce forecasts of future cumulative event counts:

$$\widehat{C}_{t,d} = C_{t,\tau-t} \widehat{f}_{\tau-t+1} \dots \widehat{f}_d \quad \text{for } t = 2, \dots, \tau, \text{ and } d = \tau - t + 1, \dots, \tau - 1. \quad (11)$$

We use these chain ladder estimates for the daily cumulative event counts to initialize the expected incremental event counts as

$$N_{td}^{(0)} = \begin{cases} N_{td} & \text{if } d \leq \tau - t \\ \widehat{C}_{t,\tau-t+1} - C_{t,\tau-t} & \text{if } d = \tau - t + 1 \\ \widehat{C}_{td} - \widehat{C}_{t,d-1} & \text{otherwise,} \end{cases}$$

for $t = 1, \dots, \tau$ and apply an M-step, as outlined above with $k = 0$, to find decent starting values $\Theta^{(0)}$.

Convergence. The log-likelihood (4) increases with each EM iteration (McLachlan and Krishnan, 2008). Given proper starting values, the sequence $\Theta^{(k)}$ converges to the maximum likelihood estimator (MLE) of Θ corresponding to the incomplete data log-likelihood $\log \mathcal{L}(\Theta; \mathbf{N}^r)$ in (4). The stopping criterion we apply is based on the relative change in the log-likelihood. Namely, we iterate until the absolute value of $\{\log \mathcal{L}(\Theta^{(k)}; \mathbf{N}^r) - \log \mathcal{L}(\Theta^{(k-1)}; \mathbf{N}^r)\} / \{0.1 + \log \mathcal{L}(\Theta^{(k)}; \mathbf{N}^r)\}$ becomes smaller than 10^{-8} . The parameter vector estimate upon convergence is denoted by $\widehat{\Theta}$.

3.3 Asymptotic variance-covariance matrix

The estimator for Θ obtained from the EM algorithm has the same limit as the MLE, whenever the starting value is adequately chosen. Hence, the maximum likelihood asymptotic theory in terms of consistency, asymptotic normality and asymptotic efficiency applies. In particular, if we denote

$$S(\Theta; \mathbf{N}^r) = \frac{\partial}{\partial \Theta} \log \mathcal{L}(\Theta; \mathbf{N}^r) \quad \text{and} \quad I(\Theta; \mathbf{N}^r) = -\frac{\partial^2}{\partial \Theta \partial \Theta'} \log \mathcal{L}(\Theta; \mathbf{N}^r),$$

as the incomplete data score statistic and observed information matrix, then the asymptotic variance-covariance matrix of the MLE $\widehat{\Theta}$ is equal to the inverse of the incomplete data expected (Fisher) information matrix given by $\mathcal{I}(\Theta) = E_{\Theta} [I(\Theta; \mathbf{N}^r)]$. The asymptotic variance-covariance matrix can be approximated by $\mathcal{I}^{-1}(\widehat{\Theta})$. It is also common practice to estimate this matrix using the inverse of the observed information matrix evaluated at $\Theta = \widehat{\Theta}$, i.e. $I^{-1}(\widehat{\Theta}; \mathbf{N}^r)$. This matrix is produced as a by-product when applying Newton-Raphson's method.

When the parameters are estimated using the EM algorithm, the observed information matrix is however not directly accessible. Moreover, the main reason why the EM algorithm is chosen over Newton-Raphson's method is because it avoids the computation of the first- and second-order partial derivatives of the incomplete data log-likelihood. In case an estimate of the covariance matrix of the MLE is required, Louis (1982) showed how the observed information matrix can be expressed in terms of the gradient and curvature of the complete data log-likelihood function. For this purpose, we introduce for the complete data

$$S_c(\Theta; \mathbf{N}) = \frac{\partial}{\partial \Theta} \log \mathcal{L}_c(\Theta; \mathbf{N}) \quad \text{and} \quad I_c(\Theta; \mathbf{N}) = -\frac{\partial^2}{\partial \Theta \partial \Theta'} \log \mathcal{L}_c(\Theta; \mathbf{N}),$$

and denote

$$\mathcal{I}_c(\Theta; \mathbf{N}^r) = E_{\Theta} [I_c(\Theta; \mathbf{N}) | \mathbf{N}^r]_g \quad \text{and} \quad \mathcal{I}_c(\Theta) = E_{\Theta} [I_c(\Theta; \mathbf{N})].$$

The missing information principle writes the observed information as the (conditional expected) complete information minus the ‘missing’ information,

$$\mathbf{I}(\boldsymbol{\Theta}; \mathbf{N}^r) = \mathcal{I}_c(\boldsymbol{\Theta}; \mathbf{N}^r) - \mathcal{I}_m(\boldsymbol{\Theta}; \mathbf{N}^r) \quad (12)$$

where

$$\mathcal{I}_m(\boldsymbol{\Theta}; \mathbf{N}^r) = -\mathbb{E}_{\boldsymbol{\Theta}} \left[\frac{\partial^2}{\partial \boldsymbol{\Theta} \partial \boldsymbol{\Theta}'} \log \frac{\mathcal{L}_c(\boldsymbol{\Theta}; \mathbf{N})}{\mathcal{L}(\boldsymbol{\Theta}; \mathbf{N}^r)} \middle| \mathbf{N}^r \right]$$

denotes the ‘missing’ information matrix, which can be computed as (Louis, 1982)

$$\begin{aligned} \mathcal{I}_m(\boldsymbol{\Theta}; \mathbf{N}^r) &= \mathbb{E}_{\boldsymbol{\Theta}} [\mathbf{S}_c(\boldsymbol{\Theta}; \mathbf{N}) \mathbf{S}'_c(\boldsymbol{\Theta}; \mathbf{N}) \mid \mathbf{N}^r] - \mathbf{S}(\boldsymbol{\Theta}; \mathbf{N}^r) \mathbf{S}'(\boldsymbol{\Theta}; \mathbf{N}^r) \\ &= \text{Cov}_{\boldsymbol{\Theta}} [\mathbf{S}_c(\boldsymbol{\Theta}; \mathbf{N}) \mid \mathbf{N}^r]. \end{aligned} \quad (13)$$

As such, the observed information matrix in (12) can be expressed in terms of conditional moments of the first- and second-order partial derivatives of the complete data log-likelihood function, which is more amenable to analytical calculations than the incomplete data analog. By averaging both sides of (12) over the distribution of \mathbf{N}^r , we get an expression for the expected information matrix $\mathbf{I}(\boldsymbol{\Theta}) = \mathcal{I}_c(\boldsymbol{\Theta}) - \mathbb{E}_{\boldsymbol{\Theta}} [\mathcal{I}_m(\boldsymbol{\Theta}; \mathbf{N}^r)]$. In our framework, we are interested in the parameter uncertainty concerning the parameters $\boldsymbol{\alpha}$ of the Poisson occurrence model and $\boldsymbol{\theta}$ of the reporting delay distribution. Appendix A assesses these covariance matrices for the reporting delay structure proposed in Section 4.2.

3.4 Prediction of unreported event counts

Using the estimated parameter vector $\hat{\boldsymbol{\Theta}}$, we predict the number of daily unreported events in the lower triangle of Table 1. Point estimators for all $N_{td} \in \mathbf{N}^{\text{nr}}$ can be obtained using the expected values $\hat{N}_{td} = \mathbb{E}_{\hat{\boldsymbol{\Theta}}} [N_{td} \mid \mathbf{N}^r] = \hat{\lambda}_t \hat{p}_{td}$. Similarly, the total number of unreported events per day is estimated by $\hat{N}_t^{\text{nr}} = \sum_{d=\tau-t+1}^{\infty} \hat{N}_{td} = \hat{\lambda}_t \hat{p}_t^{\text{nr}}$ and the total number of unreported events over all occurrence days by $\hat{N}^{\text{nr}} = \sum_{t=1}^{\tau} \hat{N}_t^{\text{nr}}$. Moreover, under the model assumptions of Section 3.1, the future daily number of events N_{td} ($t \leq \tau, t+d > \tau$) are independently Poisson distributed and we thus have that $N_{td} \sim \text{Poisson}(\lambda_t p_{td})$, $N_t^{\text{nr}} \sim \text{Poisson}(\lambda_t p_t^{\text{nr}})$ and $N^{\text{nr}} \sim \text{Poisson}(\sum_{t=1}^{\tau} \lambda_t p_t^{\text{nr}})$. This allows us to construct prediction intervals and to make probabilistic statements concerning the number of unreported events by replacing the intensities by their maximum likelihood estimators.

3.5 Applying the EM framework to the classical aggregated method

In Section 3.5 the chain ladder method was introduced as the state-of-the art multiplicative model for event counts aggregated over discrete time periods. We now discuss how the parameters of the chain ladder method can equivalently be estimated using the framework we introduced in Section 3.2. The complete log-likelihood related to the chain ladder method is similar to (5) with the difference that the reporting delay probabilities p_d do not depend on the occurrence period t and the sum over d runs until $\tau - 1$. The latter is linked to the fact that the chain ladder method does not allow for extrapolation beyond the range of data (cfr. England and Verrall, 2002, for extensions of the classical chain ladder method which involve the estimation of tail factors). The E-step is the same as (7) with, for $t = 1, \dots, \tau$ and $d = 0, \dots, \tau - 1$, $p_{td}^{(k-1)}$ replaced by $p_d^{(k-1)}$, whereas the M-step simplifies to

$$\lambda_t^{(k)} = N_t^{(k)} = \sum_{d=0}^{\tau-1} N_{td}^{(k)} \quad \text{and} \quad p_d^{(k)} = \frac{\sum_{t=1}^{\tau} N_{td}^{(k)}}{\sum_{t=1}^{\tau} \sum_{d=0}^{\tau-1} N_{td}^{(k)}} = \frac{\sum_{t=1}^{\tau} N_{td}^{(k)}}{\sum_{t=1}^{\tau} N_t^{(k)}}.$$

In case the chain ladder factors (10) are used in the initial step (see Section 3.2), such that in fact $N_{td}^{(0)} = \hat{\lambda}_t \hat{p}_d$ for $t = 2, \dots, \tau$ and $d = \tau - t + 1, \dots, \tau - 1$ due to the equivalence with the Poisson model, convergence is reached immediately the first time we apply the M-step above. Indeed, we then obtain

$$\lambda_t^{(0)} = \sum_{d=0}^{\tau-1} N_{td}^{(0)} = \sum_{d=0}^{\tau-t} N_{td} + \sum_{d=\tau-t+1}^{\tau-1} N_{td}^{(0)} = \sum_{d=0}^{\tau-t} \hat{\lambda}_t \hat{p}_d + \sum_{d=\tau-t+1}^{\tau-1} \hat{\lambda}_t \hat{p}_d = \hat{\lambda}_t \sum_{d=0}^{\tau-1} \hat{p}_d = \hat{\lambda}_t,$$

where we used (1). Similarly, using (2), we find

$$p_d^{(0)} = \frac{\sum_{t=1}^{\tau} N_{td}^{(0)}}{\sum_{t=1}^{\tau} \sum_{d=0}^{\tau-1} N_{td}^{(0)}} = \frac{\sum_{t=1}^{\tau-d} N_{td} + \sum_{t=\tau-d+1}^{\tau} N_{td}^{(0)}}{\sum_{t=1}^{\tau} \hat{\lambda}_t} = \frac{\sum_{t=1}^{\tau} \hat{\lambda}_t \hat{p}_d}{\sum_{t=1}^{\tau} \hat{\lambda}_t} = \hat{p}_d.$$

Using the EM algorithm, the iterative steps are easy and intuitive and, upon convergence, the same parameter estimators for λ_t and p_d are obtained compared to direct maximum likelihood optimization. When structuring the occurrence and reporting delay parameters (as we propose in Section 3.1), the model can no longer be solved analytically nor formulated as a GLM and hence the EM algorithm offers an elegant solution.

4 Case study

We demonstrate our methodology using the data from Antonio and Plat (2014) on a portfolio of general liability insurance policies for private individuals from a European insurance company. This data set has also been studied in Pigeon et al. (2013), Pigeon et al. (2014), Godecharle and Antonio (2015) and Crevecoeur et al. (2019).

4.1 Description of the insurance dataset

Detailed claims information is available from January 1997 until August 2009. This includes the occurrence date of a claim and the time between occurrence and notification to the insurance company.

We use the number of policies as exposure-to-risk. This is available by month from January 2000 onwards. Exposure is expressed as *earned exposure*, i.e. the fraction of policies actually exposed to risk during the period. This means that a policy covered during 10 days in January will contribute 10/365th to the exposure of that month. Earned exposure is not available on a daily level so instead we transform the monthly exposure to daily exposure by dividing by the number of days in each month. This accounts for the varying month lengths.

Since exposure information is only available from January 2000 onwards and to enable out-of-sample prediction, we restrict our analysis to claims that have occurred between January 1, 2000 and August 31, 2004. We set the evaluation date τ at the end of this time window, on August 31, 2004 and want to estimate the total incurred but not reported (IBNR) claim count, as well as the reporting dates of these IBNR claims. Based on the full data set until August 2009, 176 671 claims have occurred during this time window. Due to a reporting delay, only 174 624 of these have been reported by the evaluation date, as depicted in blue in the daily run-off triangle in Figure 2. The remaining 2047 are IBNR claims, i.e. claims which have occurred between January 2000 and August 2004 but have only been reported after the evaluation date and before the end of the observation period. These are graphically illustrated in red in Figure 2.

An accurate estimation of IBNR claim counts requires an understanding and modeling of the reporting delay distribution. Therefore, we apply the modeling strategy outlined in Section 3 to this data set.

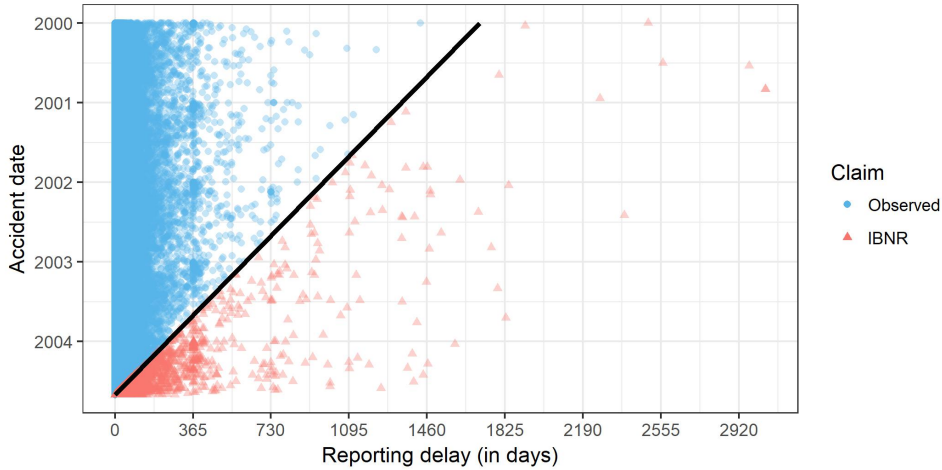


Figure 2: Daily run-off triangle of claims with occurrence dates between January 1, 2000 and August 31, 2004. The black line indicates the evaluation date, August 31, 2004. Only the claims in the upper triangle depicted as blue dots are observed at the evaluation date. The remaining claims in the lower triangle depicted as red triangles are the IBNR claims based on the full data set until August 2009 and have to be predicted.

4.2 Parametric model for the reporting delay probabilities

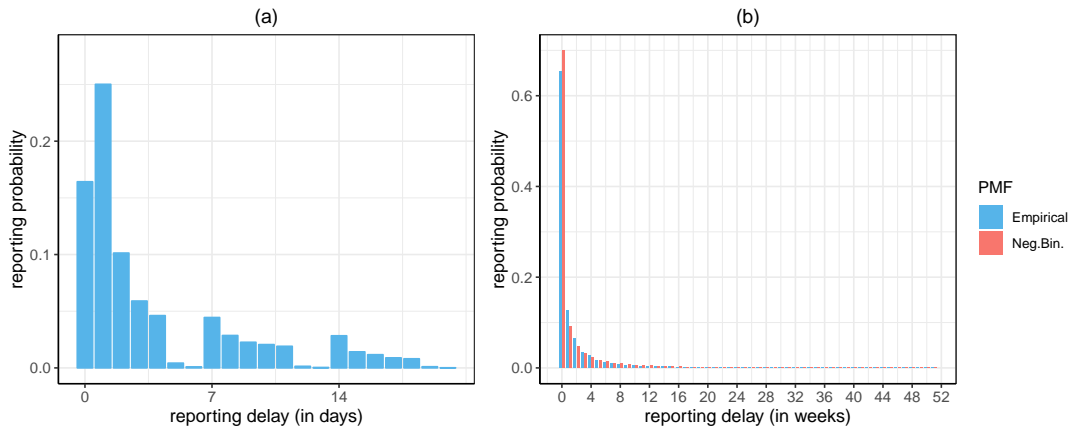


Figure 3: (a) Bar plot of the empirical reporting delay distribution in the first 28 days for claims that occurred on a Monday. (b) Bar plot of the empirical reporting delay distribution in weeks and its negative binomial fit for the first year based on claims that occurred between January 2000 and August 2004 and have been reported before August 2009.

Assisted by the data we specify a structure for the reporting probabilities p_{td} introduced in assumption (A2). The barplot in Figure 3a shows the empirical reporting probabilities in the first 28 days after occurrence for claims that occurred on a Monday. Reporting probabilities decrease over time and are low on Saturdays and Sundays. The claims in Figure 3a all occurred on a Monday and thus the first weekend corresponds to delays of 5 (Saturday) and 6 (Sunday) days. Following this intra-week pattern, we structure reporting delay as the product of week

probabilities and day probabilities:

$$p_{td} = \begin{cases} p_{t0}^W \cdot p_{td}^1 & \text{for } d < 7 \\ p_{t\lfloor \frac{d}{7} \rfloor}^W \cdot p_{td}^2 & \text{otherwise.} \end{cases}$$

Here p_{tw}^W denotes the probability of reporting an event from occurrence day t in the w -th week after occurrence. The reporting week probabilities

$$p_{tw}^W = \frac{\Gamma(\phi + w)}{w! \Gamma(\phi)} \frac{\phi^\phi \mu_t^w}{(\phi + \mu_t)^{\phi+w}} \quad \text{for } w = 0, 1, 2, \dots, \quad (14)$$

are modeled using the probability mass function of a negative binomial distribution with expected value $\mu_t = \exp(\mathbf{z}'_t \boldsymbol{\beta})$ and variance $\mu_t + \mu_t^2 / \phi$, where ϕ is the dispersion parameter and \mathbf{z}_t is the covariate vector corresponding to occurrence day t . Figure 3b indicates that the negative binomial distribution is a good fit for the empirical week probabilities.

In the intra-week reporting probabilities we distinguish the first week p_{td}^1 from later weeks p_{td}^2 . The reporting delay day probabilities in the first week can be written in a symbolical way as

$$p_{td}^1 = \mathbf{P}^1(\text{dow}(t), \text{wday}(t, t + d)), \quad (15)$$

where $\text{dow}(t)$ denotes the day of the week of occurrence date t and $\text{wday}(t, t + d)$ orders the working days within the reporting week with separate levels for Saturday and Sunday. For example, when the claim occurred on a Thursday, Thursday is $\text{wday}1$, Friday is $\text{wday}2$ and Monday is $\text{wday}3$. The ordering of the 7 days within the reporting week thus depends on the day of the week of the occurrence date of the claim. \mathbf{P}^1 is a 7×7 -matrix which contains the day probabilities related to the first week. Each element in \mathbf{P}^1 is between 0 and 1 and all row sums equal 1. Similarly, the reporting delay day probabilities from the second week onwards are given by

$$p_{td}^2 = \mathbf{P}^2(\text{wday}(t, t + d)), \quad (16)$$

where \mathbf{P}^2 is a 1×7 -matrix which has elements between 0 and 1 that sum up to 1.

Incorporating this structure for the reporting delay probabilities in the M-step of the EM algorithm, we optimize (9) with respect to the parameters $(\boldsymbol{\beta}, \phi, \mathbf{P}^1, \mathbf{P}^2)$, i.e. we maximize

$$\sum_{t=1}^{\tau} \left(\sum_{d=0}^{\infty} N_{td}^{(k)} \log \left(p_{t\lfloor \frac{d}{7} \rfloor}^W \right) + \sum_{d=0}^6 N_{td}^{(k)} \log(p_{td}^1) + \sum_{d=7}^{\infty} N_{td}^{(k)} \log(p_{td}^2) \right). \quad (17)$$

The new parameter estimates $\boldsymbol{\beta}^{(k)}$ and $\phi^{(k)}$ of the negative binomial distribution for the reporting delay in weeks are found by optimizing the weighted negative binomial log-likelihood,

$$\sum_{t=1}^{\tau} \sum_{d=0}^{\infty} N_{td}^{(k)} \log \left(p_{t\lfloor \frac{d}{7} \rfloor}^W \right) = \sum_{t=1}^{\tau} \sum_{w=0}^{\infty} \left(\sum_{d=0}^6 N_{t,7w+d}^{(k)} \right) \log(p_{tw}^W), \quad (18)$$

where p_{tw}^W is given in (14) with $\mu_t = \exp(\mathbf{z}'_t \boldsymbol{\beta})$. Standard software packages can be used for optimizing (18). Maximizing (17) with respect to the day probabilities (15) and (16) and under the restriction that the sums of the rows (the sums over the working days of the week) equal 1 leads to, with $u = \text{Monday}, \dots, \text{Sunday}$ and $v = \text{wday}1, \dots, \text{wday}5, \text{Saturday}, \text{Sunday}$,

$$(\mathbf{P}^1(u, v))^{(k)} = \frac{\sum_{t=1, \dots, \tau} \sum_{\text{dow}(t)=u} \sum_{d=0, \dots, 6} \mathbf{1}_{\text{wday}(t, t+d)=v} N_{td}^{(k)}}{\sum_{t=1, \dots, \tau} \sum_{\text{dow}(t)=u} \sum_{d=0}^6 N_{td}^{(k)}},$$

$$(\mathbb{P}^2(v))^{(k)} = \frac{\sum_{t=1}^{\tau} \sum_{\substack{d=7, \dots, \infty \\ \text{wday}(t, t+d)=v}} N_{td}^{(k)}}{\sum_{t=1}^{\tau} \sum_{d=7}^{\infty} N_{td}^{(k)}}.$$

4.3 Parameter estimates

The parameters $\Theta = \{\alpha, \beta, \phi, \mathbb{P}^1, \mathbb{P}^2\}$ are estimated using the EM algorithm of Section 3.2. The maximum likelihood estimates of the day probabilities \mathbb{P}^1 within the first reporting week are reported in Table 2 and those of the day probabilities \mathbb{P}^2 from the second reporting week onwards are given in Table 3. Only a small fraction of claims is being reported on Saturdays and nearly none on Sundays. In fact, in the entire observed part of the data, only 3 claims have been reported on Sunday. The day probabilities in the first week have separate estimates by **dow**, whereas no distinction is made from the second week onwards.

The effects related to the categorical predictors month, day of the month and day of the week of the occurrence date are visualized in Figure 4 for the Poisson regression model of the claim occurrences and in Figure 5 for the negative binomial regression model of the reporting delay in weeks. The corresponding maximum likelihood estimates of the parameter vectors α (resp. β), except for the intercept term, are plotted along with 95% confidence intervals based on the inverse of the expected information matrix $\mathcal{I}^{\alpha, \alpha}(\hat{\Theta})$ (resp. $\mathcal{I}^{\beta, \beta}(\hat{\Theta})$) as derived in Appendix A. Simultaneous confidence intervals are constructed in each graph using the Bonferroni correction to adjust for multiple comparisons. For completeness, we also report that in the Poisson model the intercept is estimated as -2.4074 (S.E. 0.0145) and in the negative binomial model the intercept is estimated as 1.8139 (S.E. 0.0321) and the dispersion parameter ϕ as 0.1807.

The month predictor reveals a seasonal pattern in which the number of claims rises in the middle of the year and falls around the year end. Most claims occur in June and least in December with an estimated difference in expected value of 33%. The reporting delay in weeks on the other hand has the highest expected values for claims that occurred in winter months and the lowest in autumn months.

Modeling the seasonal variations in the occurrence process with respect to the day of the week shows an increase in the expectation of the number of claims on Saturdays and a slight

Table 2: Maximum likelihood estimates of the day probabilities \mathbb{P}^1 within the first reporting week. Separate reporting day probabilities are estimated for each day of the week (**dow**) of the occurrence date, as shown in the rows.

dow	wday						
	wday1	wday2	wday3	wday4	wday5	Saturday	Sunday
Monday	0.2600	0.4006	0.1638	0.0957	0.0744	0.0055	0.0000
Tuesday	0.2722	0.4131	0.1486	0.0900	0.0689	0.0072	0.0000
Wednesday	0.2699	0.3802	0.1739	0.0972	0.0700	0.0088	0.0000
Thursday	0.2639	0.4106	0.1464	0.0925	0.0696	0.0170	0.0000
Friday	0.2985	0.3003	0.1527	0.1006	0.0712	0.0767	0.0000
Saturday	0.4575	0.2045	0.1284	0.0843	0.0722	0.0531	0.0000
Sunday	0.4778	0.2232	0.1375	0.0891	0.0672	0.0051	0.0001

Table 3: Maximum likelihood estimates of the day probabilities \mathbb{P}^2 from the second reporting week onwards.

wday1	wday2	wday3	wday4	wday5	Saturday	Sunday
0.2890	0.2118	0.1828	0.1541	0.1426	0.0197	0.0000

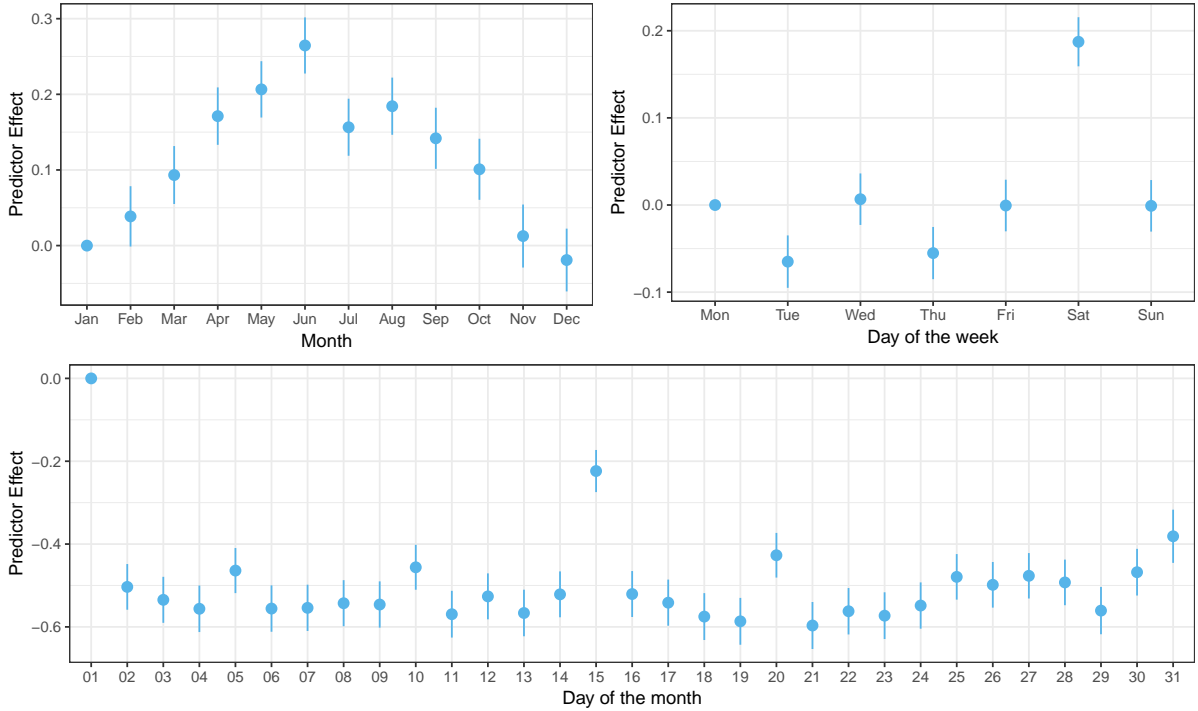


Figure 4: Maximum likelihood estimates for α corresponding to the categorical effects of the month, the day of the week and the day of the month of the occurrence date in the Poisson claim occurrence model. 95% simultaneous confidence intervals are constructed using the Bonferroni correction and the inverse of the expected information matrix $\mathcal{I}^{\alpha,\alpha}(\hat{\Theta})$ derived in Appendix A.

decrease on Tuesdays and Thursdays. The reporting delays in weeks only vary mildly by day of the week with the highest estimates on Thursdays and Fridays and the lowest on Sundays.

The categorical effect of the day of the month shows a remarkable pattern which is similar in both the claim occurrence model and the reporting delay model. On the 1st and 15th, the number of claims as well as the reporting delays have significantly higher expected values. A similar effect, but to a lower extent, is also present for the 5th, 10th, 20th, 25th, and 30th or 31st day of each month. This pattern can most likely be explained by rounding errors of the occurrence date when insureds have to report a claim which took place several weeks or months ago. When the policyholder can no longer precisely remember the actual occurrence date, he simply reports the first day or the middle of the month in which the claim occurred or, less frequently, replaces the month day by a value which is a multiple of 5. Since this misreporting of dates is more likely to occur for claims which are only reported after a longer time period, we simultaneously see an increase in the expected reporting delay for claims occurring on these rounded month days.

4.4 Prediction of unreported claim counts

Besides providing insight in the claim occurrence process and the reporting delay distribution, the main goal of our model is to estimate the number of unreported claims. In our setting, the IBNR claims are those with occurrence date in between January 1, 2000 and August 31, 2004 that have only been reported after the evaluation date, $\tau = \text{August 31, 2004}$. We know there are 2047 such IBNR claims in the full data set, which runs until August 2009, of which we know the corresponding occurrence date and reporting delay, see the lower triangle in Figure 2. These data are used to assess the out-of-sample predictive performance.

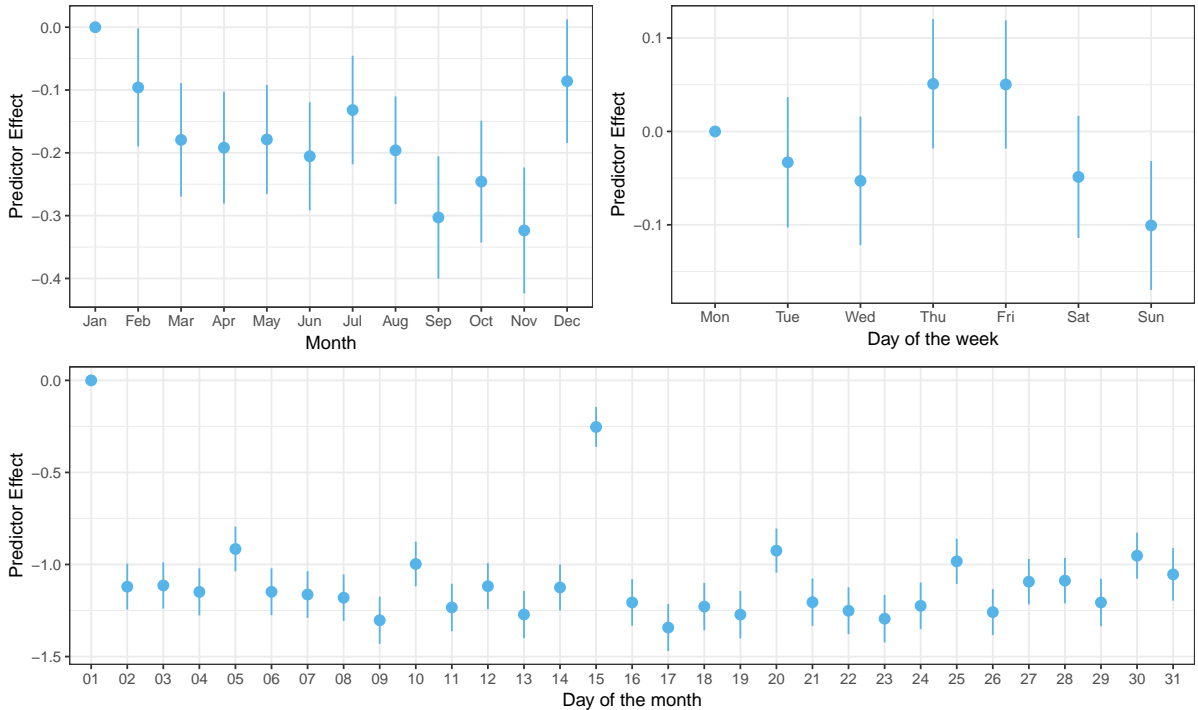


Figure 5: Maximum likelihood estimates for β corresponding to the categorical effects of the month, the day of the week and the day of the month of the occurrence date in the negative binomial reporting delay model. 95% simultaneous confidence intervals are constructed using the Bonferroni correction and the inverse of the expected information matrix $\mathcal{I}^{\beta, \beta}(\hat{\Theta})$ derived in Appendix A.

Based on the fitted model the total number of IBNR claims is estimated as $\hat{N}^{\text{nr}} = 2008.25$, which is close to the actual count. Moreover, the distributional assumptions of our model can be used to provide a 95% prediction interval given by [1921, 2097], see Section 3.4. Furthermore, since the model is defined on a daily level, the total IBNR prediction can be divided into daily forecasts by occurrence date and by reporting date. To illustrate this strong point of our model, we predict the IBNR claim counts by occurrence dates in Figure 6 and by reporting dates in Figure 7.

In Figure 6a we plot point estimates and 95% simultaneous prediction intervals for N_t^{nr} with t corresponding to occurrences dates in between July 1, 2004, and August 31, 2004, i.e. the last two months from our training period. The predictions follow the same trend as the actual IBNR claim counts derived from the full data set until August 2009. In particular, we notice for instance how IBNR claims are elevated on the first day and middle of each month, in line with our earlier findings. In Figure 6b (resp. Figure 6c) we group the occurrence dates by weeks (resp. months) prior to the evaluation date and show the IBNR claim count predictions corresponding to the past 26 weeks (resp. 12 months). We notice how, also over longer time spans, the predictions by occurrence week or month follow the pattern observed in the actual unreported counts.

In Figure 7 we disperse the total predicted IBNR claim count according to the date on which the claims will be reported to the insurer. It means we now focus on estimating $\sum_{t=1}^{\tau} N_{t, \rho-t}$ for $\rho = \tau + 1, \tau + 2, \dots$, i.e. the number of unreported claims reported on day 1, 2, \dots of the out-of-sample period. This forms an appealing way to use our model in practice as it gives the insurer a refined view on the reporting times. The predictions on a daily level in Figure 7a range from

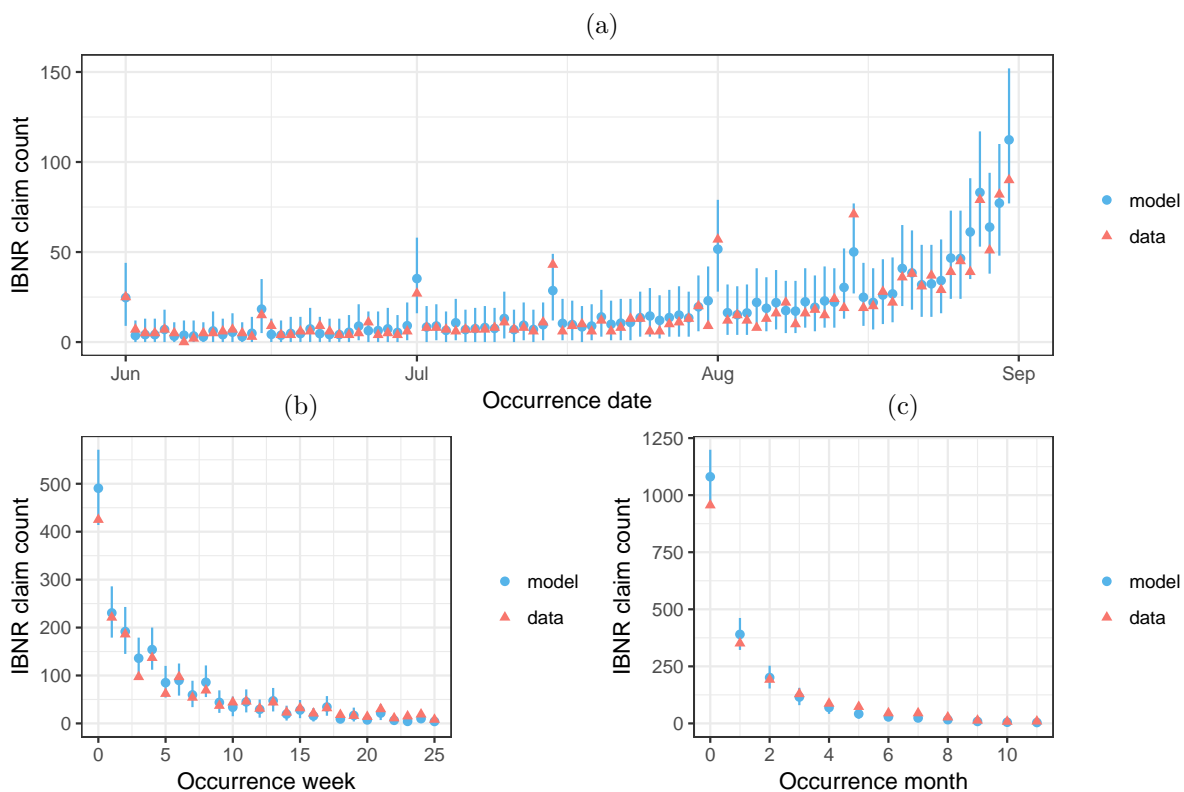


Figure 6: Predictions of the IBNR claim counts by occurrence date. Simultaneous prediction intervals are constructed at the 95% confidence level using the Bonferroni correction. The actual IBNR claim counts are derived based on the full data set until August 2009. In (a), we show predictions by day for occurrence dates in between July 1, 2004, and August 31, 2004. In (b), we group the occurrence dates by weeks (7 days) prior to the evaluation date and show the predictions corresponding to the past 26 weeks. In (c), we group the occurrence dates by months (30 days) from the evaluation date and show the predictions corresponding to the past 12 months.

September 1, 2004, until November 7, 2004 and are again accompanied by 95% simultaneous prediction intervals. When compared to the out-of-sample actual values, the forecasts clearly capture the downward trend in the reporting of IBNR claims and the nearly absence of reporting in weekends. This is primarily the case due to the day probabilities in our model which reflect the day-specific aspects of the reporting delay. Similar as before, in Figure 7b (resp. Figure 7c) we group the reporting dates by weeks (resp. months) after the evaluation date and show the IBNR claim count predictions corresponding to the next 26 weeks (resp. 12 months).

4.5 Prediction of total unreported claim counts over time

Finally, we evaluate how the model performs in estimating the total IBNR claim count when it is refitted to a different subset of the data. In order to do so, we adjust the evaluation date τ , which was chosen to be August 31, 2004, to any date in between August 31, 2003, and August 31, 2004. For each such τ , we refit the model based on the observed data by that date, $\mathbf{N}^r = \{N_{td} \mid 1 \leq t \leq \tau, d \geq 0, t + d \leq \tau\}$, and produce an estimate of the total unreported count $N^{\text{nr}} = \sum_{t=1}^{\tau} N_t^{\text{nr}}$ corresponding to claims that occurred before τ . Figure 8 contrasts these predictions along with 95% simultaneous prediction intervals to the actual total IBNR claim counts at each evaluation date based on the full data set.

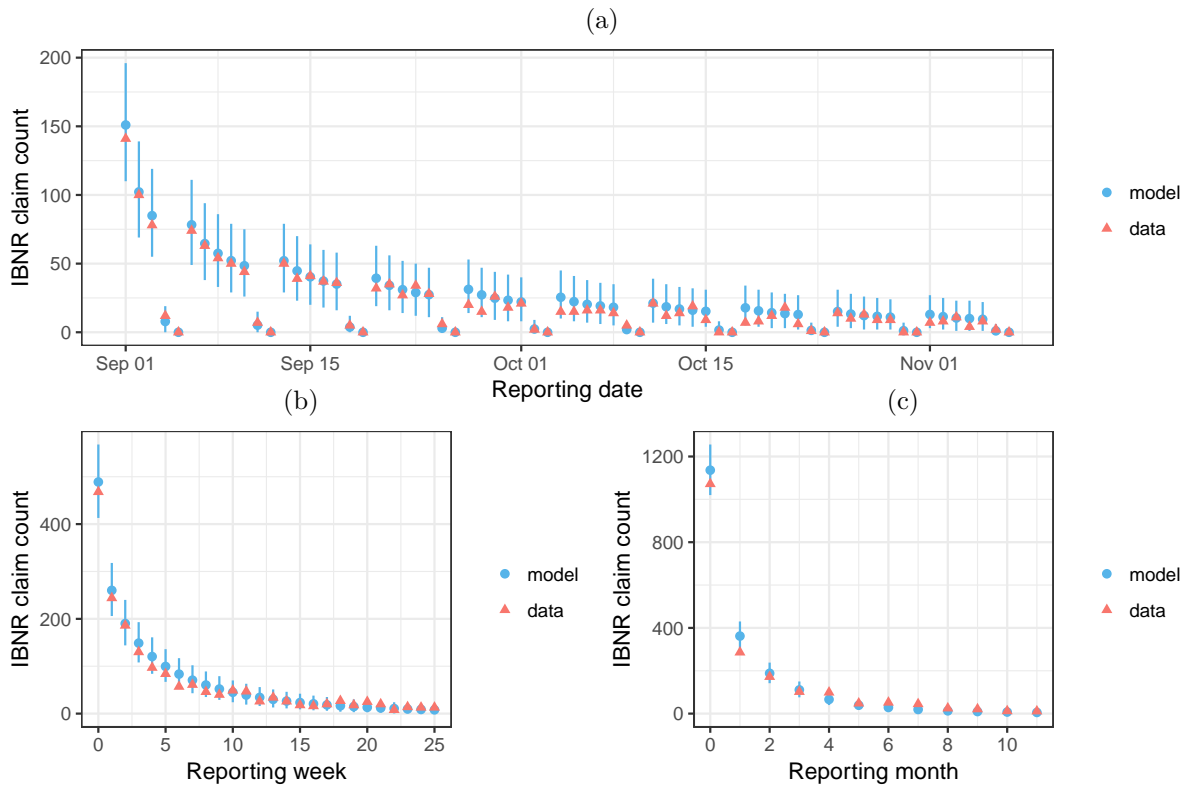


Figure 7: Predictions of the IBNR claim counts by reporting date. Simultaneous prediction intervals are constructed at the 95% confidence level using the Bonferroni correction. The actual IBNR claim counts are derived based on the full data set until August 2009. (a) Predictions by day for reporting dates in between September 1, 2004, and November 7, 2004. (b) Reporting dates grouped by weeks (7 days) after the evaluation date and predictions corresponding to the next 26 weeks. (c) Reporting dates grouped by months (30 days) after the evaluation date and predictions corresponding to the next 12 months.

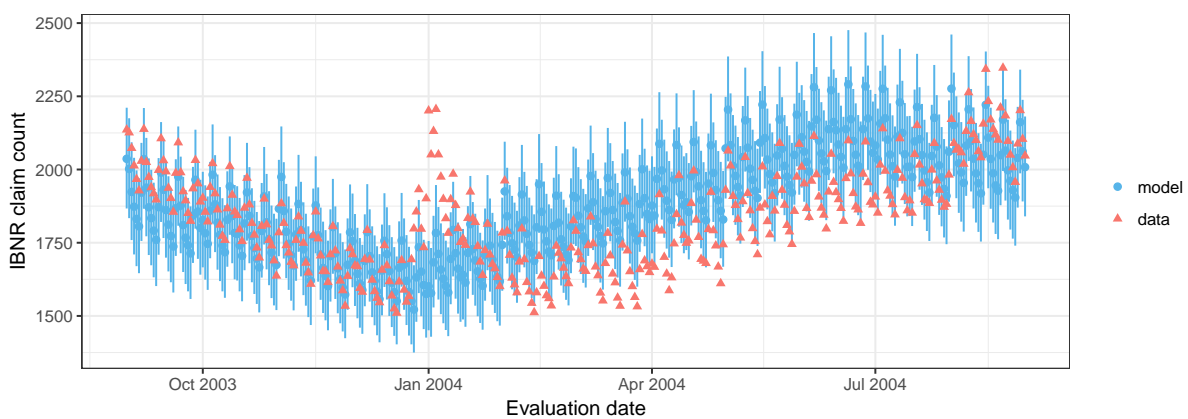


Figure 8: Predictions of the total IBNR claim counts for varying evaluation dates τ in between August 31, 2003, and August 31, 2004. Simultaneous prediction intervals are constructed at the 95% confidence level using the Bonferroni correction. The actual total IBNR claim counts are derived based on the full data set until August 2009.

Overall, our model estimates follow the seasonal pattern observed in the actual IBNR claim counts quite well. Deviations from the observed trend might be due to variations from year to year in the effect of the month on the occurrence of claims and on the reporting delay. In our model, we assume the seasonal monthly pattern to be the same over the different years. As a result, the estimates in Figures 4 and 5 are averaged values. However, including effects of calendar year or interactions of months with calendar years in both the occurrence model and the reporting delay model is harmful for the predictive performance and leads to a severe underestimation of the total number of IBNR claims (results not shown). The last calendar year typically contains the most cases with delays, see Figure 2. As a consequence, the extra parameters related to the last occurrence year are used to further maximize the likelihood of the observed claims in the upper triangle of Table 1 but lead to bad extrapolations for the lower triangle. Imposing restrictions and allowing the calendar year to be only used in either the occurrence model is a better strategy to extrapolate the past observed patterns, but still cannot provide on-target predictions over the entire range of evaluation dates of Figure 8 (results not shown). This illustrates how the claim arrival process subject to reporting delay is an intrinsically hard process to model.

Possible reasons why the occurrence process of claims might change over time include changes in product design and conditions, changes in the business environment, changes in legislation, and changes in the registration of reported claims. If any of this is the case and corresponding expert-knowledge is available on how it impacts the claim arrival process, then the model could be appropriately adjusted. The regressors used in the Poisson distribution for the daily total claim counts and the negative binomial distribution of the reporting delay in weeks could be easily extended based on external covariate information of which the insurer believes it affects the claim occurrence process. A more refined measure for the exposure-to-risk, such as the sum of the net earned premiums instead of the earned exposure, could also help improve our predictions.

From Figure 8 we also notice an increase in the total IBNR claim count around the end of the year. The model can incorporate this aspect using designated dummy indicators in the regression models, but this would not completely make the predictions at the end of the year in line with the actual values (results not shown). This is due to the fact that the insurance company is closed around the holidays, preventing any claims from being reported at that time. Tackling this issue requires to adjust the day-specific probabilities to take the absence of reporting on holidays into account, as is done in [Crevecoeur et al. \(2019\)](#).

4.6 Comparison with the chain ladder method

Figure 9 contains the ratio of the predicted and actual total IBNR claim counts over the varying evaluation dates and makes the comparison with the chain ladder method (see Section 2.2). The latter method is applied on the daily data as well as on data first aggregated in a yearly triangular display, as is most commonly done. When using the same micro-level information on daily level as in our proposed model, the chain ladder method estimates are variable and the errors can be substantial due to its assumption of a stationary reporting process which is not reasonable using daily data. Better results are obtained when applying the method to data first aggregated on annual level. The forecasts using yearly data are more stable, especially around the turn of the year. Figure 9b indicates however that both the daily and yearly chain ladder method predictions are systematically lower on Saturdays and Sundays since they are not able to capture the daily weekday patterns in the occurrence and reporting delay process. Our method on the contrary explicitly accounts for these effects in both the occurrence process of the claims and the reporting delay distribution.

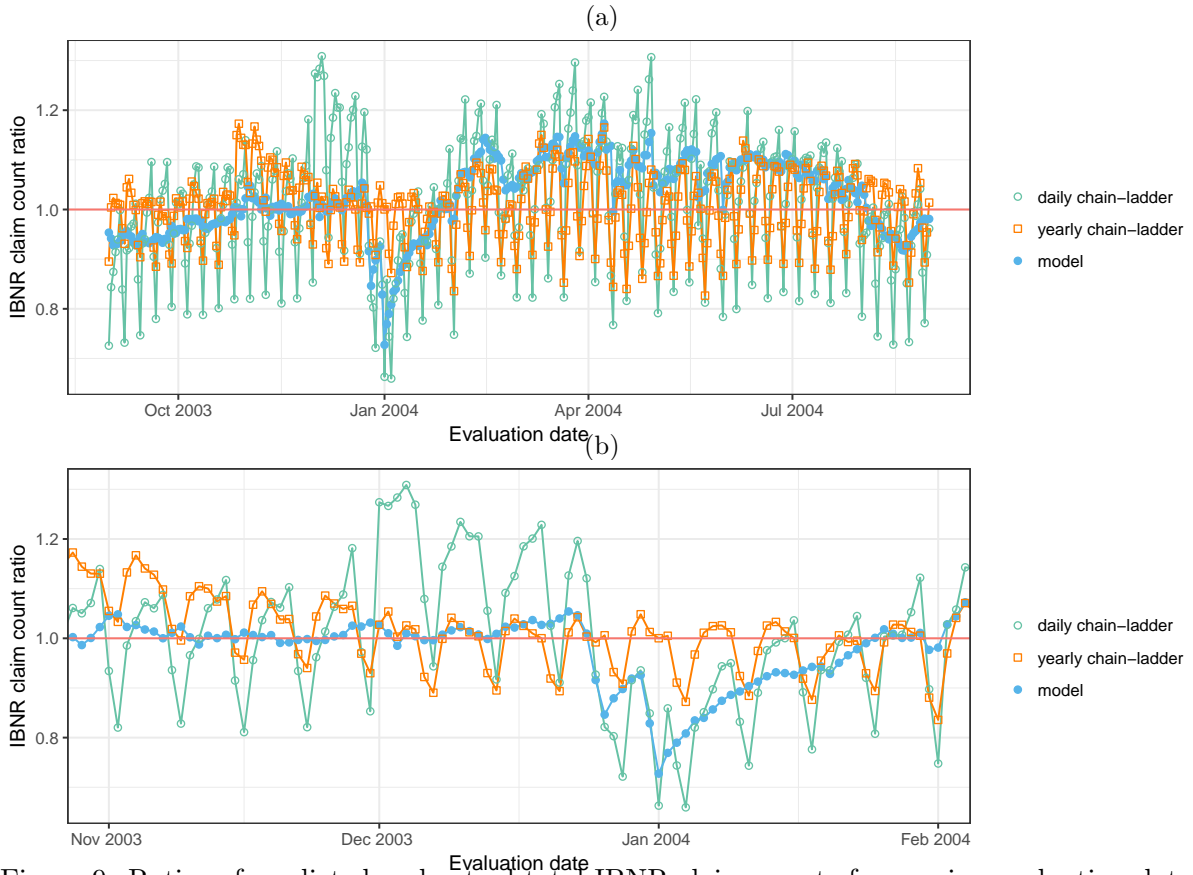


Figure 9: Ratios of predicted and actual total IBNR claim counts for varying evaluation dates (a) in between August 31, 2003, and August 31, 2004 and (b) in between November 1, 2003, and January 31, 2004. Predictions are made using the chain ladder method on the daily and yearly run-off triangle and using our proposed model. The actual total IBNR claim counts are derived based on the full data set until August 2009.

5 Conclusions and outlook

We review and structure the literature on modelling the occurrence of events subject to a reporting or observation delay. We then propose a new technique to model the event occurrence process on a *daily* basis in order to estimate the number of unreported events. The method uses regression models for count data and treats the right truncation of the reporting delays as a type of missing data. Applying the EM algorithm strongly simplifies maximum likelihood estimation as it allows for the use of standard statistical software to fit the regression models. We investigate the performance of this method to an insurance case-study where focus is on predicting the number of incurred but not (yet) reported claims in a European portfolio of general liability insurance policies for private individuals. The presented model provides a better understanding of the claim arrival process and can be used to predict unreported claims on a daily level. Moreover, we demonstrate how the parameter estimators of a classical method for aggregated data, also known as the chain ladder method, can be found using the EM approach.

We indicate some possible directions for future research. First of all, we would like to stress that the provided estimation framework involving the EM algorithm is applicable in a wide context (e.g. biostatistics and reliability engineering) whenever cases are only reported after a delay. This provides a more desirable alternative over the ad hoc methods or two-step approaches used earlier in the literature. The estimation procedure described in Section 3.2 is readily applicable to other contexts after specifying a suitable parametric model for the

reporting delay probabilities.

It would then be interesting to explore different distributional assumptions for the daily total event counts and the reporting delay structure. The reporting delay can be easily altered within the given framework to, for instance, a zero-inflated or hurdle distribution or a more heavy-tailed distribution. Relaxing the Poisson assumption for the daily total event counts is also feasible but might complicate the E-step in which we now relied on the thinning property of Poisson distributions. The EM framework is however compatible with latent underlying processes affecting the occurrence of events such as hidden Markov models or shot noise process (see e.g. [Badescu et al., 2019](#); [Avanzi et al., 2016](#)). Another promising approach would be to investigate how time series models for counts (see [Jung and Tremayne, 2011](#), for an overview) could be introduced in this setting.

Acknowledgements

The authors are grateful to the editor, associate editor and the referee for the valuable comments and suggestions. Support is acknowledged from the agency for Innovation by Science and Technology (IWT 131173), Research Foundation Flanders (FWO 11G4619N), the Ageas Continental Europe and the Argenta Research Chairs at KU Leuven and from KU Leuven's research council projects COMPACT C24/15/001 and GOA/12/14.

A Derivation of the asymptotic variance-covariance matrix

Covariance matrix with respect to α . The asymptotic covariance matrix of the MLE $\hat{\alpha}$ can be estimated by the inverse of the submatrix of the observed information matrix related to α , evaluated at $\Theta = \hat{\Theta}$. Using relationship (12) between the incomplete data, complete data and missing information matrices, we have that

$$\mathbf{I}^{\alpha, \alpha}(\Theta; \mathbf{N}^r) = -\frac{\partial^2}{\partial \alpha \partial \alpha'} \log \mathcal{L}(\Theta; \mathbf{N}^r) = \mathcal{I}_c^{\alpha, \alpha}(\Theta; \mathbf{N}^r) - \mathcal{I}_m^{\alpha, \alpha}(\Theta; \mathbf{N}^r).$$

The subvector of the complete data score statistic related to α is equal to

$$\begin{aligned} \mathbf{S}_c^{\alpha}(\Theta; \mathbf{N}) &= \frac{\partial}{\partial \alpha} \log \mathcal{L}_c(\Theta; \mathbf{N}) = \frac{\partial}{\partial \alpha} \left[-\sum_{t=1}^{\tau} e_t \exp(\mathbf{x}'_t \alpha) + \sum_{t=1}^{\tau} N_t (\log(e_t) + \mathbf{x}'_t \alpha) \right] \\ &= -\sum_{t=1}^{\tau} e_t \exp(\mathbf{x}'_t \alpha) \mathbf{x}_t + \sum_{t=1}^{\tau} N_t \mathbf{x}_t. \end{aligned}$$

The missing information matrix with respect to α can be derived using (13) as

$$\begin{aligned} \mathcal{I}_m^{\alpha, \alpha}(\Theta; \mathbf{N}^r) &= \text{Cov}_{\Theta} [\mathbf{S}_c^{\alpha}(\Theta; \mathbf{N}) \mid \mathbf{N}^r] \\ &= \text{Cov}_{\Theta} \left[-\sum_{t=1}^{\tau} e_t \exp(\mathbf{x}'_t \alpha) \mathbf{x}_t + \sum_{t=1}^{\tau} N_t \mathbf{x}_t \mid \mathbf{N}^r \right] = \text{Cov}_{\Theta} \left[\sum_{t=1}^{\tau} N_t \mathbf{x}_t \mid \mathbf{N}^r \right] \\ &= \text{Cov}_{\Theta} \left[\sum_{t=1}^{\tau} \left(\sum_{d=\tau-t+1}^{\infty} N_{td} \right) \mathbf{x}_t \mid \mathbf{N}^r \right] = \sum_{t=1}^{\tau} \lambda_t \mathcal{D}_t^{\text{nr}} \mathbf{x}_t \mathbf{x}'_t, \end{aligned} \quad (19)$$

where we use the assumption that the daily total event counts are independently Poisson distributed. Furthermore, we compute

$$\mathbf{I}_c^{\alpha, \alpha}(\Theta; \mathbf{N}) = -\frac{\partial^2}{\partial \alpha \partial \alpha'} \log \mathcal{L}(\Theta; \mathbf{N}) = -\frac{\partial}{\partial \alpha} \mathbf{S}_c^{\alpha}(\Theta; \mathbf{N}) = \sum_{t=1}^{\tau} e_t \exp(\mathbf{x}'_t \alpha) \mathbf{x}_t \mathbf{x}'_t, \quad (20)$$

which does not depend on N such that

$$\begin{aligned}\mathcal{I}_c^{\alpha,\alpha}(\Theta; N^r) &= \mathbb{E}_\Theta [\mathcal{I}_c^{\alpha,\alpha}(\Theta; N) \mid N^r] = \mathcal{I}_c^{\alpha,\alpha}(\Theta; N), \\ \mathcal{I}_c^{\alpha,\alpha}(\Theta) &= \mathbb{E}_\Theta [\mathcal{I}_c^{\alpha,\alpha}(\Theta; N)] = \mathcal{I}_c^{\alpha,\alpha}(\Theta; N).\end{aligned}$$

By combining (19) and (20), evaluated at $\Theta = \hat{\Theta}$, we thus find that

$$\begin{aligned}\mathcal{I}^{\alpha,\alpha}(\hat{\Theta}; N^r) &= \mathcal{I}_c^{\alpha,\alpha}(\hat{\Theta}; N^r) - \mathcal{I}_m^{\alpha,\alpha}(\hat{\Theta}; N^r) \\ &= \sum_{t=1}^{\tau} e_t \exp(\mathbf{x}'_t \hat{\alpha}) \mathbf{x}_t \mathbf{x}'_t - \sum_{t=1}^{\tau} \hat{\lambda}_t \hat{p}_t^{\text{nr}} \mathbf{x}_t \mathbf{x}'_t = \sum_{t=1}^{\tau} \hat{\lambda}_t \hat{p}_t^r \mathbf{x}_t \mathbf{x}'_t,\end{aligned}\quad (21)$$

which does not depend on the observed data N^r and hence also equals $\mathcal{I}^{\alpha,\alpha}(\hat{\Theta})$. Its inverse estimates the asymptotic covariance matrix of the MLE $\hat{\alpha}$. The missing information principle applied to the parameters of the Poisson regression model for the daily event occurrences has an intuitive interpretation: the observed information (21) related to the observed daily event counts N_t^r equals their complete information (20) N_t minus the missing information (19) related to the incurred but not yet reported daily event counts N_t^{nr} .

Covariance matrix with respect to β . We use the relation

$$\mathcal{I}^{\beta,\beta}(\Theta; N^r) = -\frac{\partial^2}{\partial \beta \partial \beta'} \log \mathcal{L}(\Theta; N^r) = \mathcal{I}_c^{\beta,\beta}(\Theta; N^r) - \mathcal{I}_m^{\beta,\beta}(\Theta; N^r). \quad (22)$$

The score vector associated to β is given by

$$\mathcal{S}_c^\beta(\Theta; N) = \frac{\partial}{\partial \beta} \log \mathcal{L}_c(\Theta; N) = \sum_{t=1}^{\tau} \sum_{w=0}^{\infty} \left(\sum_{d=0}^6 N_{t,7w+d} \right) \frac{\partial}{\partial \beta} \log(p_{tw}^W)$$

where

$$\begin{aligned}\frac{\partial}{\partial \beta} \log(p_{tw}^W) &= \frac{\partial}{\partial \beta} [w \mathbf{z}'_t \beta - (\phi + w) \log(\phi + \exp(\mathbf{z}'_t \beta))] \\ &= w \mathbf{z}_t - (\phi + w) \frac{\exp(\mathbf{z}'_t \beta) \mathbf{z}_t}{\phi + \exp(\mathbf{z}'_t \beta)} = \frac{\phi(w - \exp(\mathbf{z}'_t \beta))}{\phi + \exp(\mathbf{z}'_t \beta)} \mathbf{z}_t.\end{aligned}$$

Its conditional covariance is the missing information matrix related to β ,

$$\begin{aligned}\mathcal{I}_m^{\beta,\beta}(\Theta; N^r) &= \text{Cov}_\Theta [\mathcal{S}_c^\beta(\Theta; N) \mid N^r] \\ &= \sum_{t=1}^{\tau} \left(\sum_{w=0}^{\infty} \left(\sum_{\substack{d=0,\dots,6 \\ 7w+d > \tau-t}} \lambda_t p_{t,7w+d} \right) \frac{\phi^2 (w - \exp(\mathbf{z}'_t \beta))^2}{(\phi + \exp(\mathbf{z}'_t \beta))^2} \right) \mathbf{z}_t \mathbf{z}'_t.\end{aligned}\quad (23)$$

Moreover, we calculate

$$\begin{aligned}\mathcal{I}_c^{\beta,\beta}(\Theta; N) &= -\frac{\partial^2}{\partial \beta \partial \beta'} \log \mathcal{L}(\Theta; N) = -\frac{\partial}{\partial \beta} \mathcal{S}_c^\beta(\Theta; N) \\ &= -\sum_{t=1}^{\tau} \sum_{w=0}^{\infty} \left(\sum_{d=0}^6 N_{t,7w+d} \right) \frac{\partial^2}{\partial \beta \partial \beta'} \log(p_{tw}^W)\end{aligned}\quad (24)$$

where

$$\begin{aligned}
\frac{\partial^2}{\partial \boldsymbol{\beta} \partial \boldsymbol{\beta}'} \log(p_{tw}^W) &= \frac{\partial}{\partial \boldsymbol{\beta}} \left[\frac{\phi(w - \exp(\mathbf{z}'_t \boldsymbol{\beta}))}{\phi + \exp(\mathbf{z}'_t \boldsymbol{\beta})} \mathbf{z}_t \right] \\
&= \frac{-\phi(\phi + \exp(\mathbf{z}'_t \boldsymbol{\beta})) \exp(\mathbf{z}'_t \boldsymbol{\beta}) - \phi(w - \exp(\mathbf{z}'_t \boldsymbol{\beta})) \exp(\mathbf{z}'_t \boldsymbol{\beta})}{(\phi + \exp(\mathbf{z}'_t \boldsymbol{\beta}))^2} \mathbf{z}_t \mathbf{z}'_t \\
&= -\frac{\phi(\phi + w) \exp(\mathbf{z}'_t \boldsymbol{\beta})}{(\phi + \exp(\mathbf{z}'_t \boldsymbol{\beta}))^2} \mathbf{z}_t \mathbf{z}'_t.
\end{aligned}$$

On substituting (23) and (24) into (22), we then have that

$$\begin{aligned}
\mathbf{I}^{\beta, \beta}(\hat{\boldsymbol{\Theta}}; \mathbf{N}^r) &= \mathbf{I}_c^{\beta, \beta}(\hat{\boldsymbol{\Theta}}; \mathbf{N}^r) - \mathbf{I}_m^{\beta, \beta}(\hat{\boldsymbol{\Theta}}; \mathbf{N}^r) \\
&= \sum_{t=1}^{\tau} \left(\sum_{w=0}^{\infty} \left(\sum_{d=0}^6 \hat{N}_{t, 7w+d} \right) \frac{\hat{\phi}(\hat{\phi} + w) \exp(\mathbf{z}'_t \hat{\boldsymbol{\beta}})}{(\hat{\phi} + \exp(\mathbf{z}'_t \hat{\boldsymbol{\beta}}))^2} \right) \mathbf{z}_t \mathbf{z}'_t \\
&\quad - \sum_{t=1}^{\tau} \left(\sum_{w=0}^{\infty} \left(\sum_{\substack{d=0, \dots, 6 \\ 7w+d > \tau-t}} \hat{\lambda}_t \hat{p}_{t, 7w+d} \right) \frac{\hat{\phi}^2(w - \exp(\mathbf{z}'_t \hat{\boldsymbol{\beta}}))^2}{(\hat{\phi} + \exp(\mathbf{z}'_t \hat{\boldsymbol{\beta}}))^2} \right) \mathbf{z}_t \mathbf{z}'_t
\end{aligned}$$

with $\hat{N}_{t, 7w+d}$ defined as in (7) using the MLE $\hat{\boldsymbol{\Theta}}$. Its expectation with respect to the observed data \mathbf{N}^r is given by

$$\begin{aligned}
\mathbf{I}^{\beta, \beta}(\hat{\boldsymbol{\Theta}}) &= \mathbf{I}_c^{\beta, \beta}(\hat{\boldsymbol{\Theta}}) - \mathbb{E}_{\hat{\boldsymbol{\Theta}}} \left[\mathbf{I}_m^{\beta, \beta}(\hat{\boldsymbol{\Theta}}; \mathbf{N}^r) \right] \\
&= \sum_{t=1}^{\tau} \left(\sum_{w=0}^{\infty} \hat{\lambda}_t \hat{p}_{tw}^W \frac{\hat{\phi}(\hat{\phi} + w) \exp(\mathbf{z}'_t \hat{\boldsymbol{\beta}})}{(\hat{\phi} + \exp(\mathbf{z}'_t \hat{\boldsymbol{\beta}}))^2} \right) \mathbf{z}_t \mathbf{z}'_t \\
&\quad - \sum_{t=1}^{\tau} \left(\sum_{w=0}^{\infty} \left(\sum_{\substack{d=0, \dots, 6 \\ 7w+d > \tau-t}} \hat{\lambda}_t \hat{p}_{t, 7w+d} \right) \frac{\hat{\phi}^2(w - \exp(\mathbf{z}'_t \hat{\boldsymbol{\beta}}))^2}{(\hat{\phi} + \exp(\mathbf{z}'_t \hat{\boldsymbol{\beta}}))^2} \right) \mathbf{z}_t \mathbf{z}'_t.
\end{aligned}$$

Either the inverse of $\mathbf{I}^{\beta, \beta}(\hat{\boldsymbol{\Theta}}; \mathbf{N}^r)$ or the inverse of $\mathbf{I}^{\beta, \beta}(\hat{\boldsymbol{\Theta}})$ can be used to estimate the asymptotic covariance matrix of the MLE $\hat{\boldsymbol{\alpha}}$.

References

- Antonio, K. and R. Plat (2014). Micro-level stochastic loss reserving for general insurance. *Scandinavian Actuarial Journal* 7, 649–669.
- Avanzi, B., B. Wong, and X. Yang (2016). A micro-level claim count model with overdispersion and reporting delays. *Insurance: Mathematics and Economics* 71, 1–14.
- Badescu, A. L., X. S. Lin, and D. Tang (2016). A marked Cox model for the number of IBNR claims: Theory. *Insurance: Mathematics and Economics* 69, 29–37.
- Badescu, A. L., X. S. Lin, and D. Tang (2019). A marked Cox model for the number of IBNR claims: Estimation and application. *ASTIN Bulletin* 49, 709–739.
- Becker, N. G. and J.-S. Cui (1997). Estimating a delay distribution from incomplete data, with application to reporting lags for aids cases. *Statistics in Medicine* 16(20), 2339–2347.

- Cox, D. R. (1972). Regression models and life-tables. *Journal of the Royal Statistical Society. Series B (Methodological)* 34(2), 187–220.
- Crevecoeur, J., K. Antonio, and R. Verbelen (2019). Modeling the number of hidden events subject to observation delay. *European Journal of Operational Research* 277(3), 930 – 944.
- Dempster, A. P., N. M. Laird, and D. B. Rubin (1977). Maximum likelihood from incomplete data via the EM algorithm. *Journal of the Royal Statistical Society. Series B (Methodological)* 39(1), 1–38.
- England, P. D. and R. J. Verrall (2002). Stochastic claims reserving in general insurance. *British Actuarial Journal* 8(3), 443–518.
- Godecharle, E. and K. Antonio (2015). Reserving by conditioning on markers of individual claims: a case study using historical simulation. *North American Actuarial Journal* 19(4), 273–288.
- Hachemeister, C. A. and J. N. Stanard (1975). IBNR claims count estimation with static lag functions. In *Spring Meeting of the Casualty Actuarial Society*.
- Jewell, W. S. (1989). Predicting IBNYR events and delays: I. continuous time. *ASTIN Bulletin* 19, 25–55.
- Jung, R. C. and A. R. Tremayne (2011). Useful models for time series of counts or simply wrong ones? *AStA Advances in Statistical Analysis* 95(1), 59–91.
- Kalbfleisch, J., J. Lawless, and J. Robinson (1991). Methods for the analysis and prediction of warranty claims. *Technometrics* 33(3), 273–285.
- Kalbfleisch, J. D. and J. F. Lawless (1991). Regression models for right truncated data with applications to aids incubation times and reporting lags. *Statistica Sinica* 1(1), 19–32.
- Klein, J. and M. Moeschberger (2003). *Survival Analysis: Techniques for censored and truncated data* (Second ed.). Statistics for Biology and Health. Springer.
- Lawless, J. (1994). Adjustments for reporting delays and the prediction of occurred but not reported events. *Canadian Journal of Statistics* 22(1), 15–31.
- Louis, T. A. (1982). Finding the observed information matrix when using the EM algorithm. *Journal of the Royal Statistical Society. Series B (Methodological)* 44(2), 226–233.
- Mack, T. (1991). A simple parametric model for rating automobile insurance or estimating IBNR claims reserves. *ASTIN Bulletin* 21(1), 93–109.
- Mack, T. (1993). Distribution-free calculation of the standard error of chain ladder reserve estimates. *ASTIN Bulletin* 23(02), 213–225.
- Martínez Miranda, M. D., J. P. Nielsen, S. Sperlich, and R. Verrall (2013). Continuous chain ladder: Reformulating and generalizing a classical insurance problem. *Expert Systems with Applications* 40(14), 5588 – 5603.
- McLachlan, G. and T. Krishnan (2008). *The EM algorithm and extensions*. Wiley series in probability and statistics. Wiley-Interscience.

- Noufaily, A., P. Farrington, P. Garthwaite, D. G. Enki, N. Andrews, and A. Charlett (2016). Detection of infectious disease outbreaks from laboratory data with reporting delays. *Journal of the American Statistical Association* 111(514), 488–499.
- Noufaily, A., Y. Ghebremichael-Weldeselassie, D. G. Enki, P. Garthwaite, N. Andrews, A. Charlett, and P. Farrington (2015). Modelling reporting delays for outbreak detection in infectious disease data. *Journal of the Royal Statistical Society: Series A (Statistics in Society)* 178(1), 205–222.
- Pagano, M., X. M. Tu, V. De Gruttola, and S. MaWhinney (1994). Regression analysis of censored and truncated data: estimating reporting-delay distributions and AIDS incidence from surveillance data. *Biometrics* 50(4), 1203–1214.
- Pigeon, M., K. Antonio, and M. Denuit (2013). Individual loss reserving with the multivariate skew normal distribution. *ASTIN Bulletin* 43, 399–428.
- Pigeon, M., K. Antonio, and M. Denuit (2014). Individual loss reserving using paid–incurred data. *Insurance: Mathematics and Economics* 58, 121–131.
- Renshaw, A. E. and R. J. Verrall (1998). A stochastic model underlying the chain-ladder technique. *British Actuarial Journal* 4(4), 903–923.
- Taylor, G. (2000). *Loss reserving: an actuarial perspective*. Kluwer Academic Publishers.
- Verrall, R. J. and M. V. Wüthrich (2016). Understanding reporting delay in general insurance. *Risks* 4(3), 25.
- Wu, S. (2013). A review on coarse warranty data and analysis. *Reliability Engineering & System Safety* 114, 1–11.
- Wüthrich, M. V. and M. Merz (2008). *Stochastic claims reserving methods in insurance*, Volume 435 of *Wiley Finance*. John Wiley & Sons.
- Wüthrich, M. V. and M. Merz (2015). *Stochastic Claims Reserving Manual: Advances in Dynamic Modeling*. Swiss Finance Institute Research Paper No. 15–34.